



Shri Shivaji Education Society Amravati's  
**Shri Shivaji Science And Arts College, Chikhli**  
**Department of Zoology**  
**Best Practice**  
**Using eBird App**

- 1) **Title of the Practice:** Use of eBird App for study of birds
- 2) **Objectives of the Practice:** Enter sighting of birds around Chikhli area.
- 3) **The Context:** eBird Mobile App makes it easy to record the birds you see in the field, while making your data openly available for scientific research, education, and conservation. eBird observations make a huge difference in our understanding of birds at many levels—from making more information available for birdwatchers to eBird Science use. These data have been widely used in scientific research to study phenology, species distributions, population trends, evolution, behavior, global change, and conservation.
- 4) **The Practice:**

During field study Zoology students made aware about e Bird App. This app is worldwide use for studying bird. At first stage, Students submitted checklist of birds which are commonly found in premises. eBird data are collected and organized around the concept of a checklist, representing observations from a single birding event, such as a 1 km walk through a park or forest.

**Methodology of Entering data on eBird App on Mobile**

- a) Download eBird Mobile App from Play store
- b) Set your preferences
- c) Download and install packs

d) Start a checklist

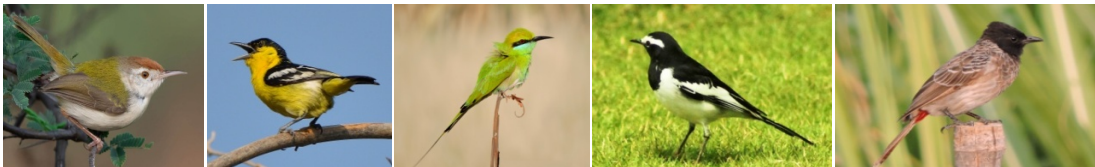
e) Select a location

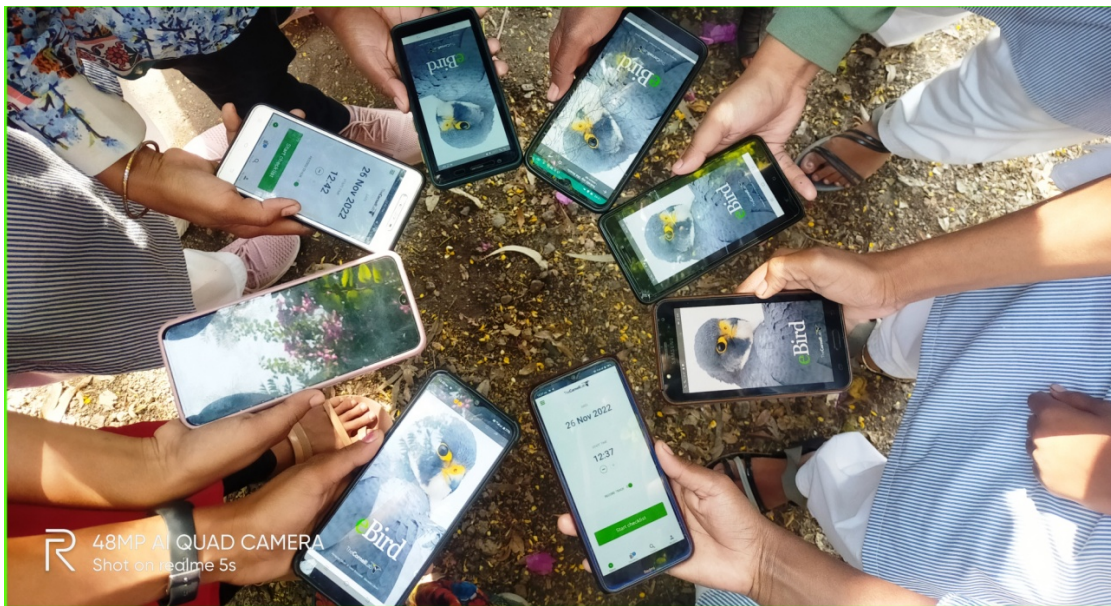
f) Review, Submit and Share

- These data have been widely used in scientific research to study phenology, species distributions, population trends, evolution, behavior, global change, and conservation.
- Each checklist contains a list of species observed, counts of the number of individuals seen of each species, the location and time of the observations, and a measure of the effort expended while collecting these data.

### 5) Evidence of success:

Zoology students regularly enter the sightings on eBird App. Data available on eBird database.





- 6) **Problems encountered:** At few locations Network issues are there at remote places.
- 7) **Notes:** Students are curious and amazed by using eBird App. They are enthusiastically started submitting sighting of birds even at their villages.

### Why is eBird Important for Science?

- ✓ Chikhli Area is surrounded by good vegetation and Avian diversity.
- ✓ eBird is global platform to share bird information across the world.
- ✓ Students are interested to study Zoology with new technology.
- ✓ eBird collects over 100 million bird sightings each year.
- ✓ Using eBird data, scientists were able to update range maps for more than 1,000 bird species.
- ✓ eBird data helps scientists understand poorly understood species.



**A special workshop organized to train the students for use of eBird App.**

**Thank You**